

# Subject Property Map

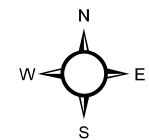
ANX-07-19

Keith Rains

NE Corner of the  
Rocky River Rd &  
Lower Rocky River  
Road Intersection

PINs:

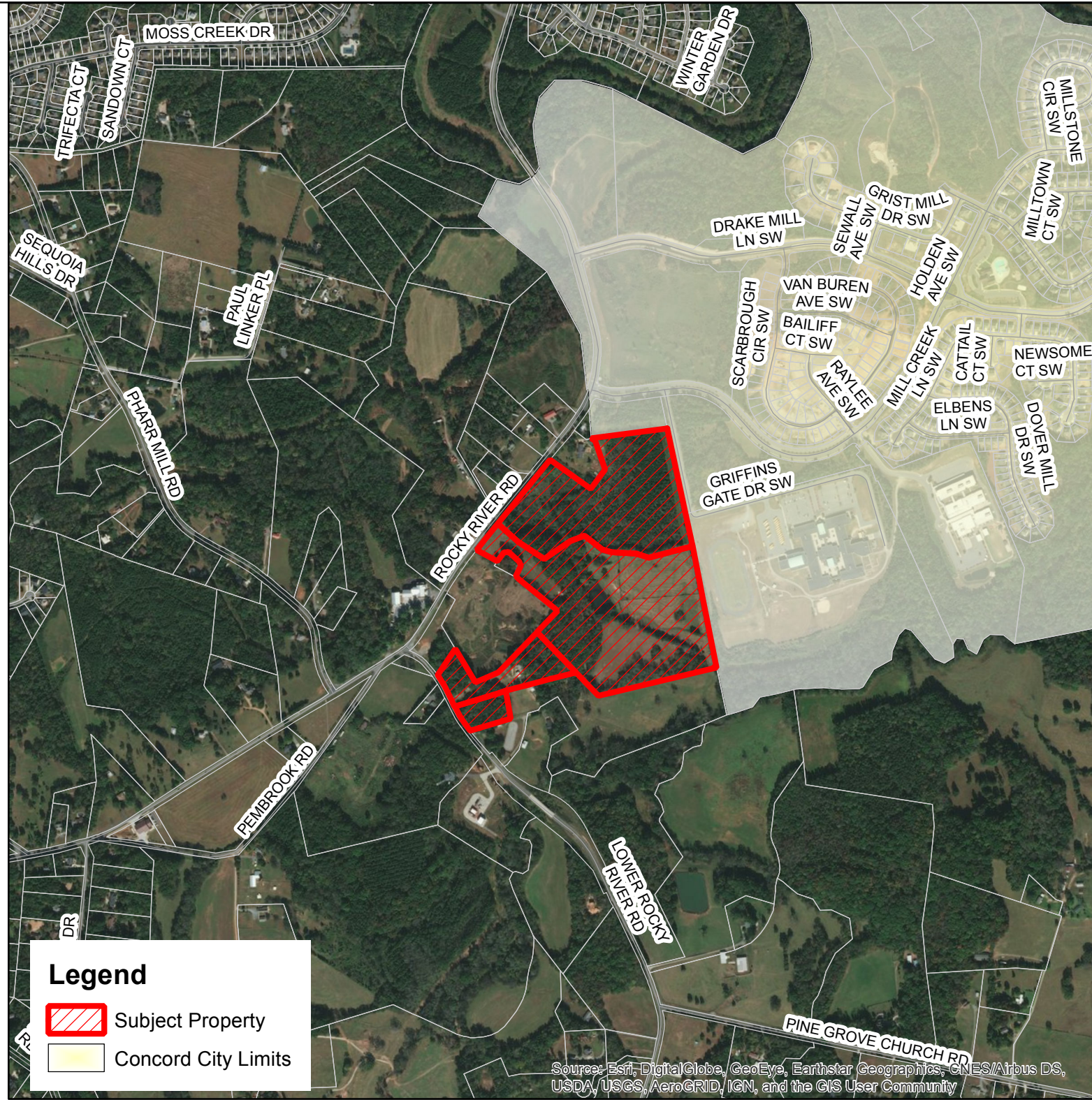
5527-41-6442,  
5527-40-6497,  
5527-40-1148,  
5526-39-8913





Source: City of Concord  
Planning Department

### Disclaimer

These maps and products are designed for general reference only and data contained herein is subject to change. The City Of Concord, it's employees or agents make no warranty of merchantability or fitness for any purpose, expressed or implied, and assume no legal responsibility for the information contained therein. Data used is from multiple sources with various scales and accuracy. Additional research such as field surveys may be necessary to determine actual conditions.



**Legend**

-  Subject Property
-  Concord City Limits